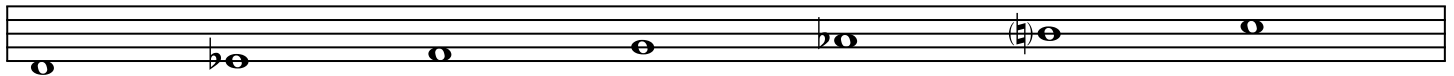


Diatonic to Harmonic Minor

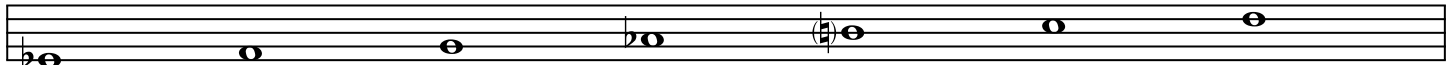
C min Cm(maj7) Cm(maj7)⁹
11 ^{b13}



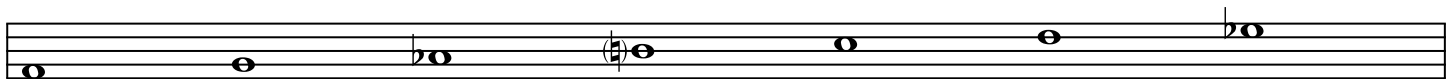
Dm7(b5) D^ø



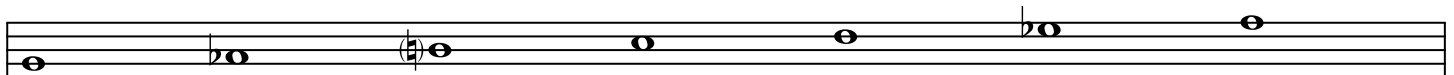
E^bMaj7#5 G/E^b E^bΔ7+5



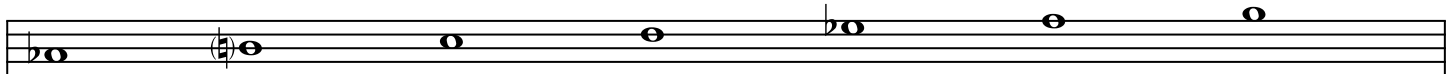
F min7 Fmin7⁹
#11 ¹³



G7^{b9} ^{b13}



A^bMaj7 A^bMaj7(#9)



B^o7 G7^{b9} / B ^{b13}

