

# GUITAR EXCERPT #1

## Cerulean Skies

Maria Schneider

Straight 8ths (♩ = 71)

1 *a little emphasis on beat 2*

4

7

GUITAR EXCERPT #2, FROM

# BIG DIPPER

BY THAD JONES

CROTCHET = 136 BPM  
(SHUFFLE FEEL)

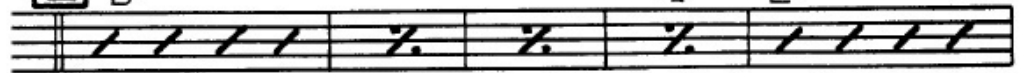
('Freddie Green' Style)

**B**

G<sup>7</sup>

4

C<sup>7</sup>



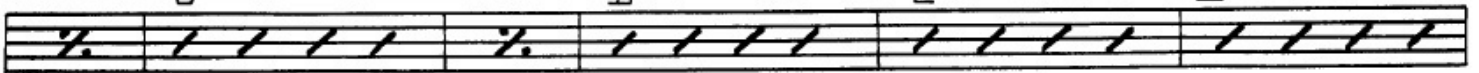
*mf*

G<sup>7</sup>

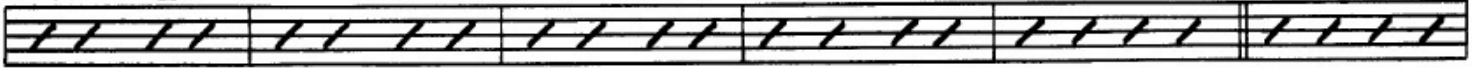
D<sup>7</sup>

C<sup>7</sup>

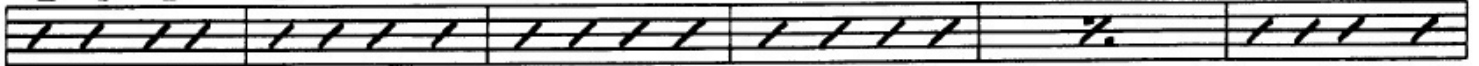
B<sup>b7</sup>



A<sup>7+</sup> D<sup>7#9</sup> G<sup>7</sup> F<sup>#7</sup> B<sup>7+</sup> E<sup>7+</sup> A<sup>7</sup> A<sup>7+</sup> D<sup>7</sup> B<sup>7</sup> E<sup>7</sup> A<sup>7</sup> D<sup>7</sup> **C** G Dm<sup>7</sup> G<sup>7</sup> G<sup>7+</sup>



C<sup>7</sup> G<sup>7</sup> C<sup>7</sup> G<sup>7</sup> D<sup>7</sup> G<sup>7</sup> C<sup>7</sup> G<sup>7</sup> D<sup>7</sup>



G<sup>7</sup> D<sup>7</sup> C<sup>7</sup> B<sup>b7</sup> A<sup>7b9</sup> E<sup>b7</sup> D<sup>7</sup> G<sup>7</sup> F<sup>#7+</sup>



B<sup>7+</sup> E<sup>7+</sup> ⊕ B<sup>bMA.7</sup> +<sup>11</sup> E<sup>bMA.7</sup> (add 6) A<sup>bMA.9</sup> +<sup>11</sup> G<sup>7</sup>

